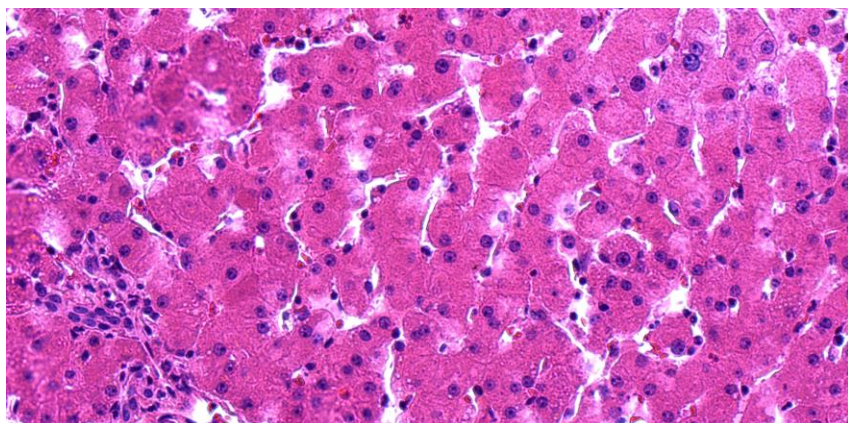


# TISSUE TOOLS



*Access primary cells through Samsara Sciences and gain access to companion tissue samples from the tissue of origin*

*Available as formalin-fixed paraffin embedded sections for histology and snap-frozen tissues suitable for nucleic acid and protein isolation*

## **What we provide**

Glass slides bearing formalin-fixed, paraffin-embedded sections are bundled in packs of 10, 20, 50, or 100, and include an electronic file with matched high-resolution H&E and Trichrome images along with a pathologic diagnosis of the specimen that includes scores for inflammation and fibrosis (Batts-Ludwig methodology<sup>1</sup>) and NAFLD score<sup>2</sup>. Mix and match from available inventory.

<sup>1</sup>American Journal of Surgical Pathology 19(12):1409-1417, 1995.

<sup>2</sup>Hepatology 41: 1313-1321, 2005.

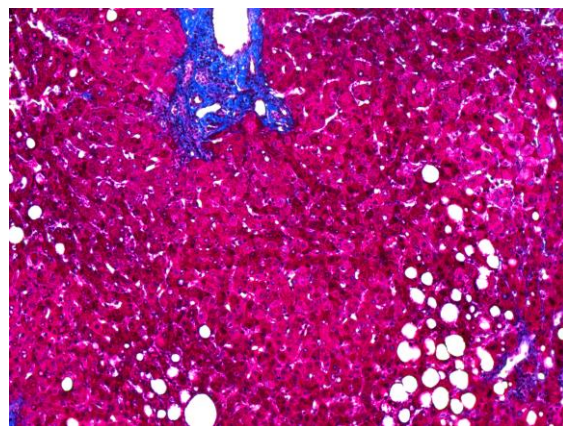
## Supporting Research

*In Liver Biology & Disease*

[sales@samsarasciences.com](mailto:sales@samsarasciences.com)

[www.samsarasciences.com](http://www.samsarasciences.com)

Phone: 858-617-0790



**(SEE REVERSE FOR A FULL LISTING OF AVAILABLE INVENTORY)**

## FFPE & SNAP-FROZEN TISSUE INVENTORY

SAMPLE ID	LIVER PATHOLOGY	DONOR AGE / GENDER	DONOR MORBIDITIES	NORMAL (GRADE 0 STEATOSIS)			GRADE 1 STEATOSIS			GRADE 2 STEATOSIS			GRADE 3 STEATOSIS		
				Inflammation Grade*	Fibrosis Score*	NAFLD Score**	Inflammation Grade*	Fibrosis Score*	NAFLD Score**	Inflammation Grade*	Fibrosis Score*	NAFLD Score**	Inflammation Grade*	Fibrosis Score*	NAFLD Score**
HL160016	Near normal	0.66 / M	Muscular Dystrophy	0	0	0									
HL160018	Near normal	35 / F	None	0	0	0									
HL150002	Near normal, regeneration	24 / M	None	0-1	0	0									
HL160026	Near normal	25 / F	Pulmonary Arterial Hypertension Lung Transplant	0	0	0									
HL150004	Near normal, ductal plate malformation	54 / M	None	1	1	0									
HL150006	Near Normal, Vascular outflow defect	31 / F	Sepsis (confirmed)	1	0	0									
HL150008	Near normal	59 / M	None	1	0	0-1									
HL150010	Inflammation (mild)	69 / M	Diabetes (Type 2), Hypertension, Renal Failure	1	0	0									
HL160020	Inflammation (mild, chronic)	43 / M	None	1	0	0									
HL160023	Inflammation (mild, chronic), bile duct hamartoma	57 / M	Diabetes (Type 2) Hypertension	1	0	0									
HL160031	Inflammation (mild), oxidative/toxic injury, fibrosis	42 / M	GERD	1	2	0									
HL160025	Inflammation (mild), glycogen accumulation	70 / M	None	1-2	0	0									
HL160019	Inflammation (mild)	53 / M	None	1-2	0	0									
HL160028	Inflammation (granulomatous)	42 / M	Hypertension	2	0	0									
HL150001	Steatosis	47 / M	Diabetes (Type 2)				0	0	1						
HL160024	Inflammation (chronic), Sepsis (possible), biliary obstruction	62 / M	Diabetes (Type 2), Hypertension, Gout				2	0	1						
HL150009	Steatosis, Drug-induced injury	37 / M	Chronic drug exposure				0	0	2						
HL160027	Steatosis	26 / M	None				1	0	2						
HL160017	Steatosis, cholangitis, fibrosis	31 / M	Chronic Alcoholism, Hypertension				1	2	2						
HL150013	Steatosis, inflammation, fibrosis	45 / M	Diabetes (Type 2), Hypertension				2	2	3						
HL160014	Cirrhosis, steatosis, inflammation (chronic)	60 / M	Chronic Alcoholism				3	4	3						
HL160030	Steatosis	29 / M	Diabetes (type 2), Hypertension, Asthma							0	0	2			
HL160032	Inflammation (mild), Steatosis	23 / M	None reported							1	0	2			
HL160015	Steatosis, fibrosis	59 / M	Hypertension, Hyperlipidemia							1	1a	3			
HL160021	Steatohepatitis (chronic, active), fibrosis	44 / F	Diabetes (Type 2), Chronic Kidney Disease										1	1a	4
HL160022	Steatohepatitis (chronic, active), fibrosis	45 / F	Epilepsy										1	2	5



[www.samsarasciences.com](http://www.samsarasciences.com)

[info@samsarasciences.com](mailto:info@samsarasciences.com)